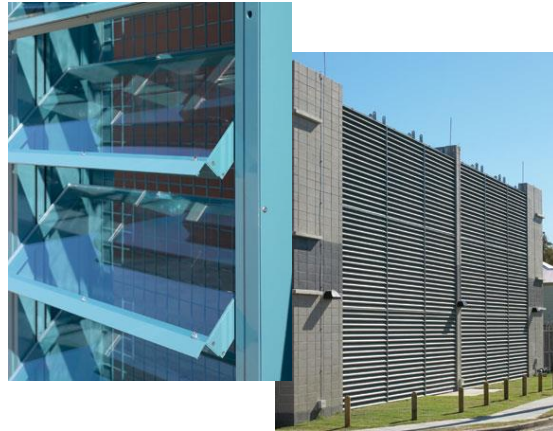


MAINTENANCE REQUIREMENTS

LOUVRES *Fixed and Operable*



Inspection Requirements

Fixed and Operable Louvres should be inspected on a 3-6 month basis to ensure the basic integrity of the Louvre.

Required cleaning of Louvre blades and frames:

- Cold water hose down of surface dirt to the inclination surfaces
- Warm soapy detergent wash over all surfaces
- Clean cold water hose down
- Allow to air dry (do not allow to air dry before rinsing off the detergent)

The above process must be carried out at least once every 6 months. Should the Louvres be 500 metres or less from salt water environment then the process should be carried out at least once every 3 months.

Inspection Requirements for both Static and Operable Louvres

An inspection of the Louvres should occur every six months or a shorter interval should be used in marine or other corrosive environments and areas where atmospheric fallout occurs. The inspection should cover, where applicable, the following;

- Check louvres for damage, wear, corrosion or residue build up.
- Check and ensure that the louvres and all components such as pulleys, hinges, latches, cables, struts, etc., are free from obstruction and capable of operation.
- Check guides, bearings, springs and hinges are well lubricated.
- Check actuators
- Check battery dates and capacities
- Check drain holes and internal drain channels are clear.
- Check ram dust covers are in place.
- Check for any mesh or bird wire damage.
- Check for any damage to sealant used.
- Any filters should be regularly checked for particle build up and cleaned every 6 months.

Please Note: If louvres are used for Fire/Heat and Smoke ventilation, the goods must be serviced and maintained according to AS1851 every six months by a competent person. This is an essential Australian Standard compliance requirement. This will involve additional requirements to the above.

All service/maintenance must be carried out by an authorised technician and service records kept. Failure to do so may void your warranty.

For all necessary repairs call Airocle on 1800 805 062

15 Redbank Place
PO BOX 583 PICTON NSW 2571
service@airocle.com.au

